

04440
BIBLIOTHECA
MUSEI
HISTORICO-
NATURALIS
POZNANENSIS

ae. 29.

ae. 29.

Dr. E. Chwatat.
par

Les Mlle de Gamber et Chwatat
pour le

"Mlle de Gamber et Chwatat"
sur leur très favori

Les Mlle de Gamber et Chwatat
et
Introduction

Introduction
Le et
Variations Amusantes
sur l'air très favori

"Ma belle inf. in der Grande Hün."

pour le
Viola di Gamber et Piano forte

par
Fr. E. Chwatal.

oe. 24.

[1808-1879]

Fr. E. Chwatal.



Rpm 7470

Introduzione.
Moderato.
F. e
F. e
di
Gamber.

Procedo.

A handwritten musical score for the song "The Rose Tree". The score is written on ten staves. The first staff is marked "Solo" and contains a melody. The second staff is marked "pp." and contains a piano accompaniment. The third staff is marked "pp." and contains a piano accompaniment. The fourth staff is marked "pp." and contains a piano accompaniment. The fifth staff is marked "pp." and contains a piano accompaniment. The sixth staff is marked "pp." and contains a piano accompaniment. The seventh staff is marked "pp." and contains a piano accompaniment. The eighth staff is marked "pp." and contains a piano accompaniment. The ninth staff is marked "pp." and contains a piano accompaniment. The tenth staff is marked "pp." and contains a piano accompaniment. The score is written in a cursive style and includes various musical notations such as notes, rests, and bar lines.

A single staff of handwritten musical notation. The notation includes a variety of note values, including minims, crotchets, and quavers, some beamed together. There are also rests and a sharp sign (#) indicating a key signature change. The handwriting is in a historical style, likely from the 18th or 19th century.

Luciano

Chemd.

Andante $\text{G}^{\#}$ C
Adema.

A single staff of handwritten musical notation on aged, yellowed paper. The notation is written in dark brown ink. It begins with a treble clef and a key signature of one sharp (F#). The music consists of several measures, each containing various note values including minims, crotchets, and quavers, along with rests. A double bar line appears after the third measure. Following this, the key signature changes to two sharps (F# and C#), indicated by two sharp symbols. The notation continues with more complex rhythmic patterns, including some notes with beams and slurs. The handwriting is elegant and characteristic of 18th-century musical manuscripts.

12. 12. 12.

A handwritten musical score on aged paper. The notation is in brown ink. It features a single staff with a treble clef. The music begins with a key signature of one sharp (F#) and a common time signature (C). The melody is written in a cursive, handwritten style. The text "Car: 1." is written above the staff. The score consists of several measures, including a long, flowing melodic line that spans across the staff. The paper shows signs of age, with some discoloration and wear.

A single staff of handwritten musical notation on aged paper. The notation consists of a series of notes and rests, with some notes beamed together. The paper shows signs of wear and discoloration.

A single staff of handwritten musical notation on aged, yellowed paper. The notation consists of various note values, including minims, crotchets, and quavers, some of which are grouped with parentheses. There are also rests and a double bar line. The ink is dark brown or black.

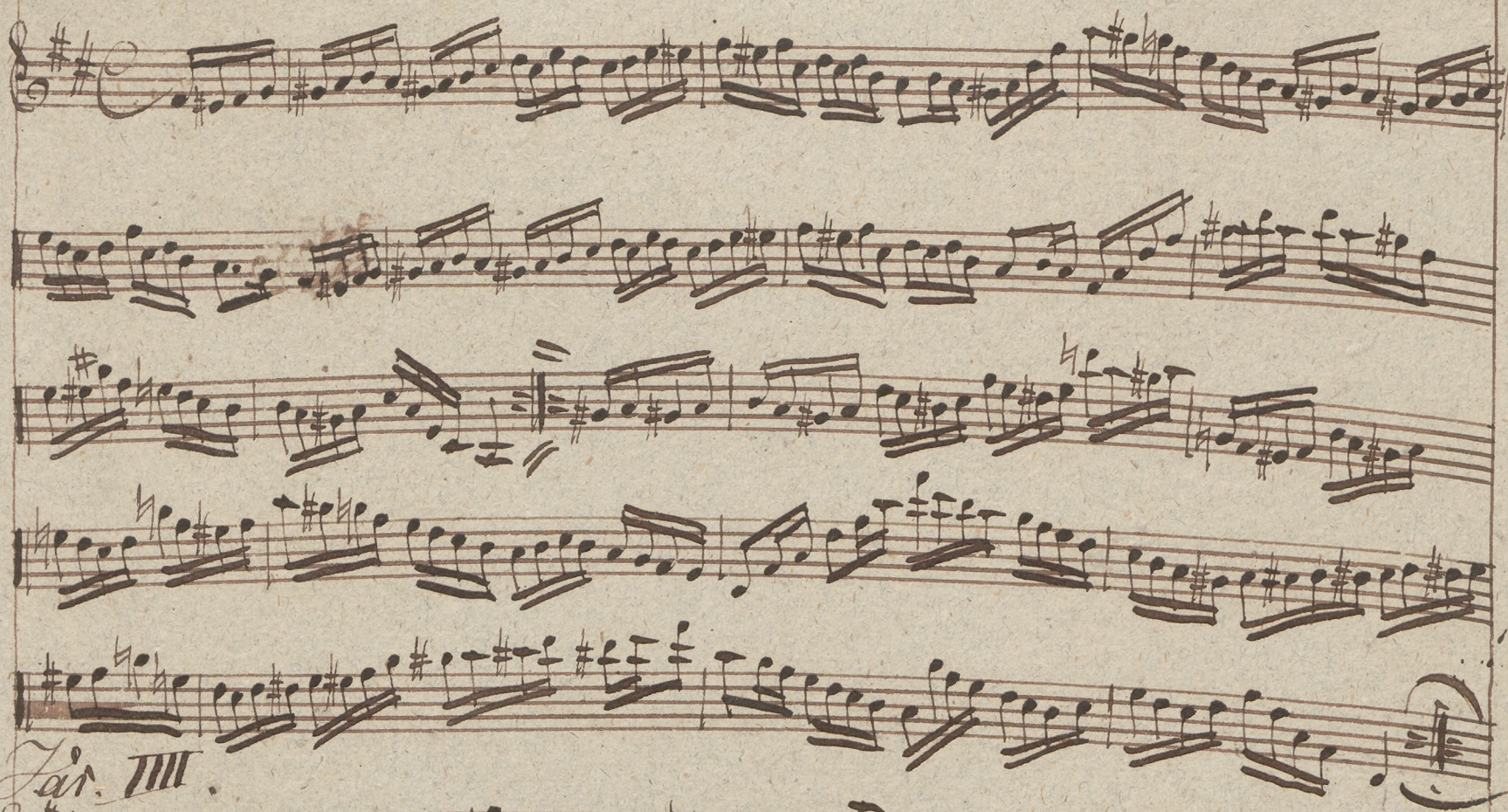
Lat. II.

A single staff of handwritten musical notation on aged, yellowed paper. The notation includes various note values, including minims, crotchets, and quavers, some beamed together. There are also rests and a double bar line. The text "Pat. II." is written in a cursive hand below the staff.

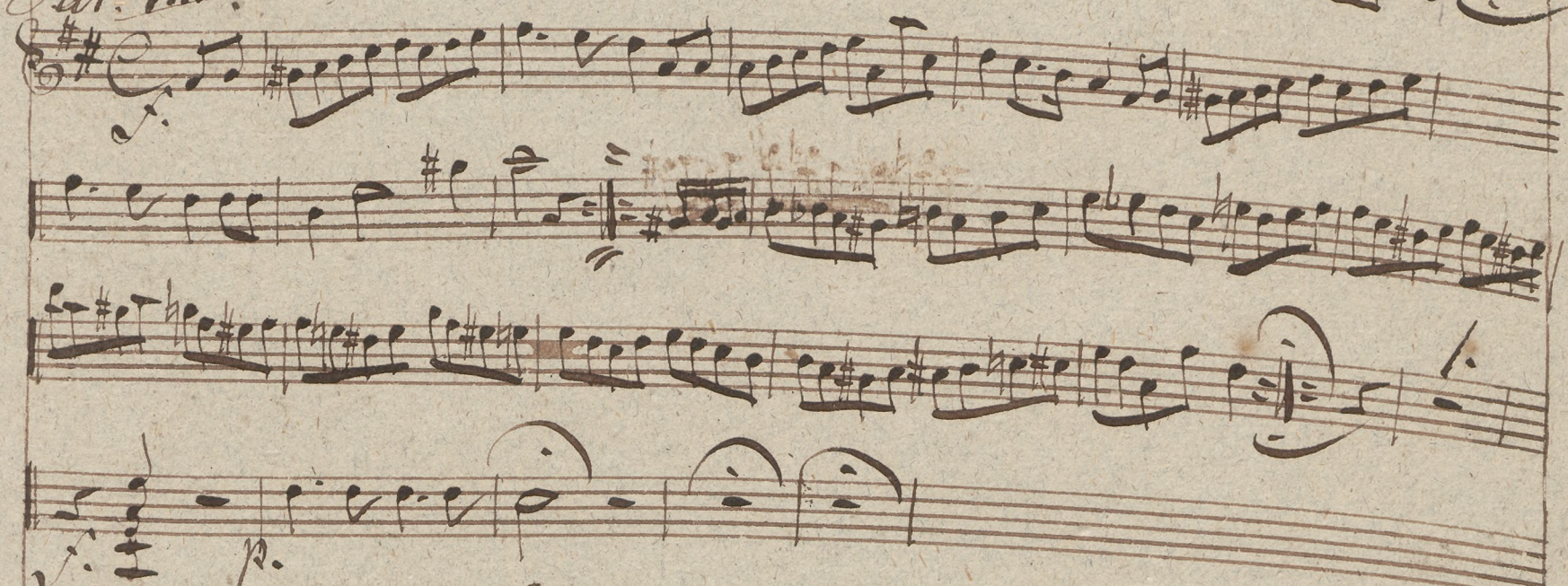
A single staff of handwritten musical notation. The notation includes various note values, including minims, crotchets, and quavers, along with rests and accidentals (sharps and naturals). The handwriting is in a historical style, likely from a 17th or 18th-century manuscript.

A single staff of handwritten musical notation on aged, yellowed paper. The notation consists of several measures separated by vertical bar lines. The notes are written in a cursive, handwritten style, with some notes having stems and others being beamed together. There are also rests and other musical symbols present. The ink is dark brown or black.

Fas. III.



Fas. III.



*Finale
Vivace*

7470

