

*Sonata*  
*Corno in Es<sup>a</sup> & Viola obf.*  
*Composte dal Sr. A. Rossini*  
*Stemung Jun:*  
*Ch 1788*



*Rpm 7459*



1.  
Sonata  
Corno in Es<sup>a</sup> & Viola obz.  
Composte dal Sr A Rosetti  
Fleming jun:  
Ch 1788

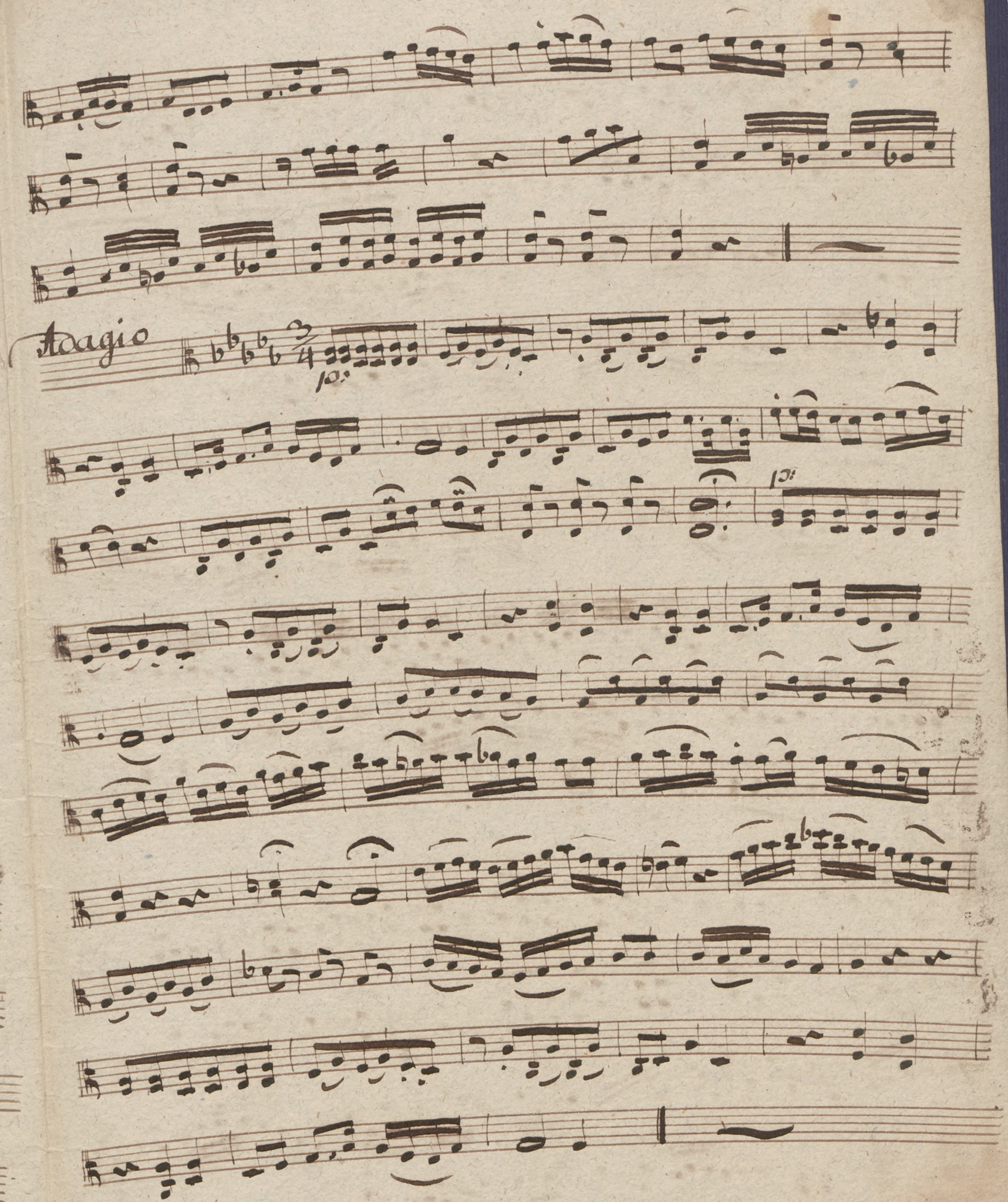
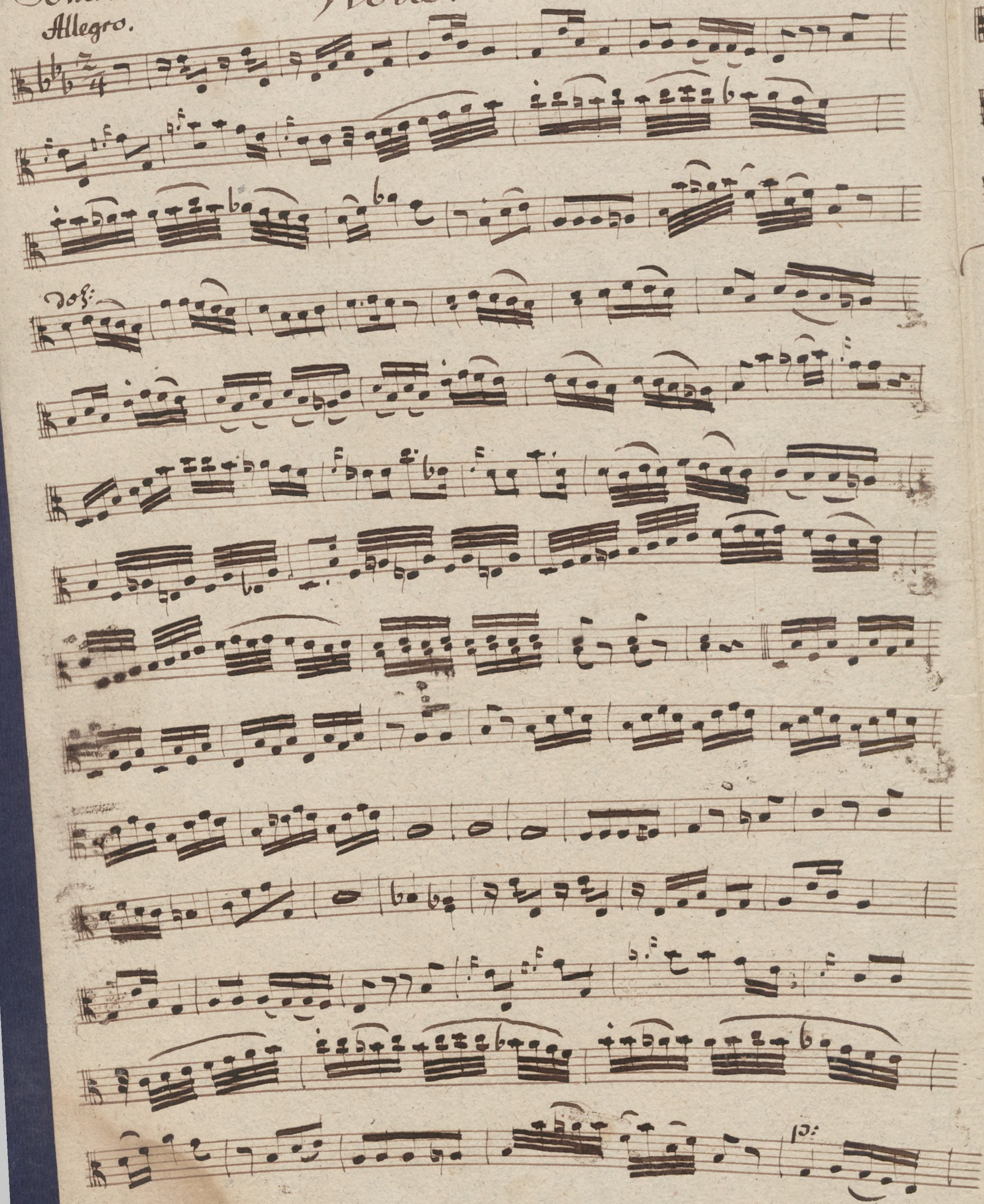


Rpm 7459



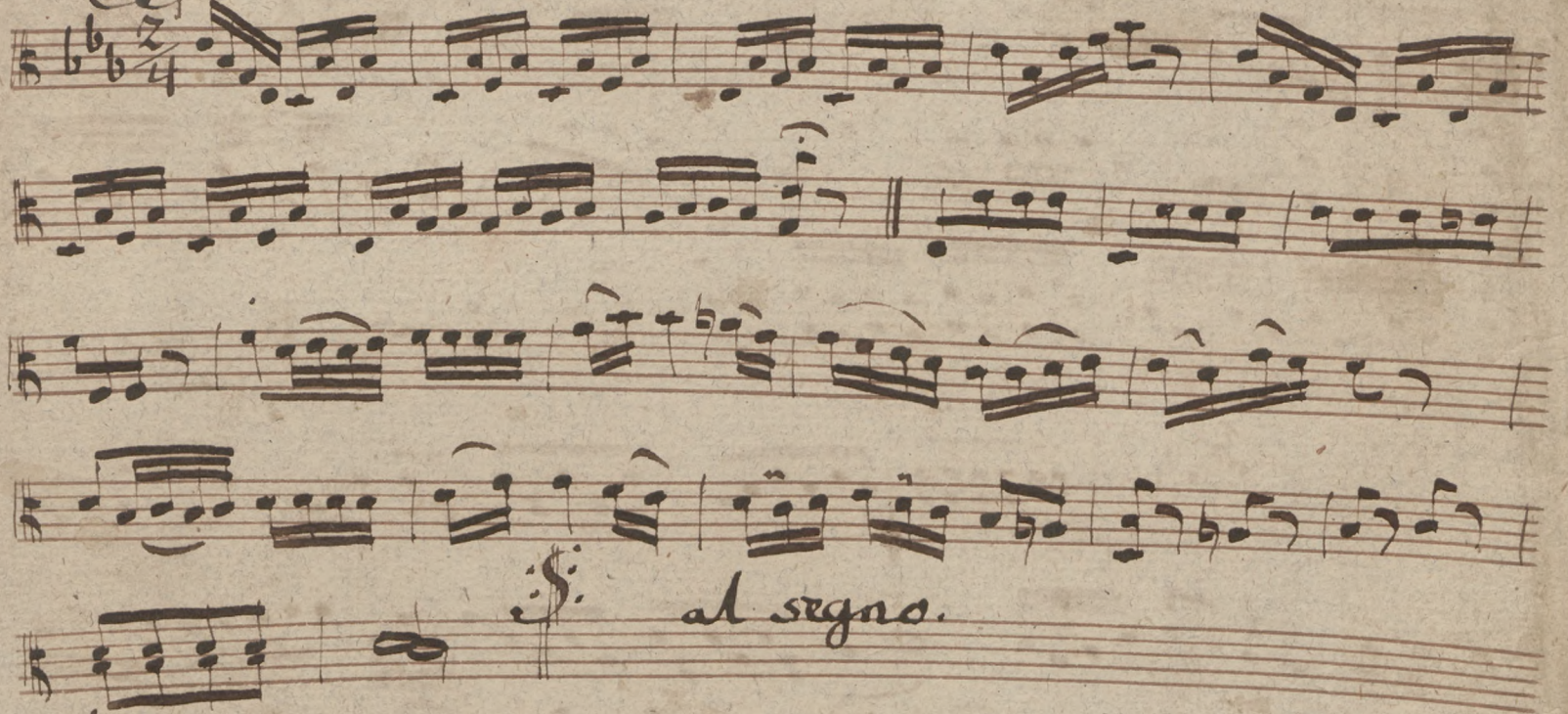
Sonata  
Allegro.

Viola.

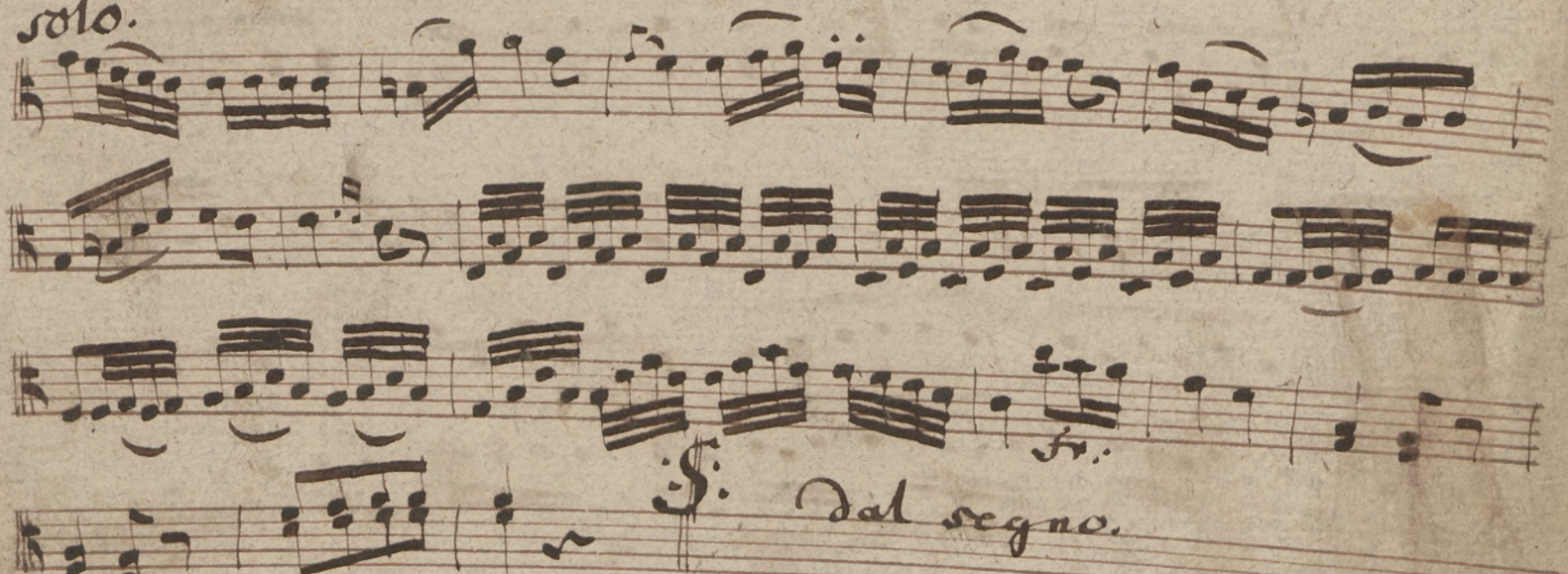




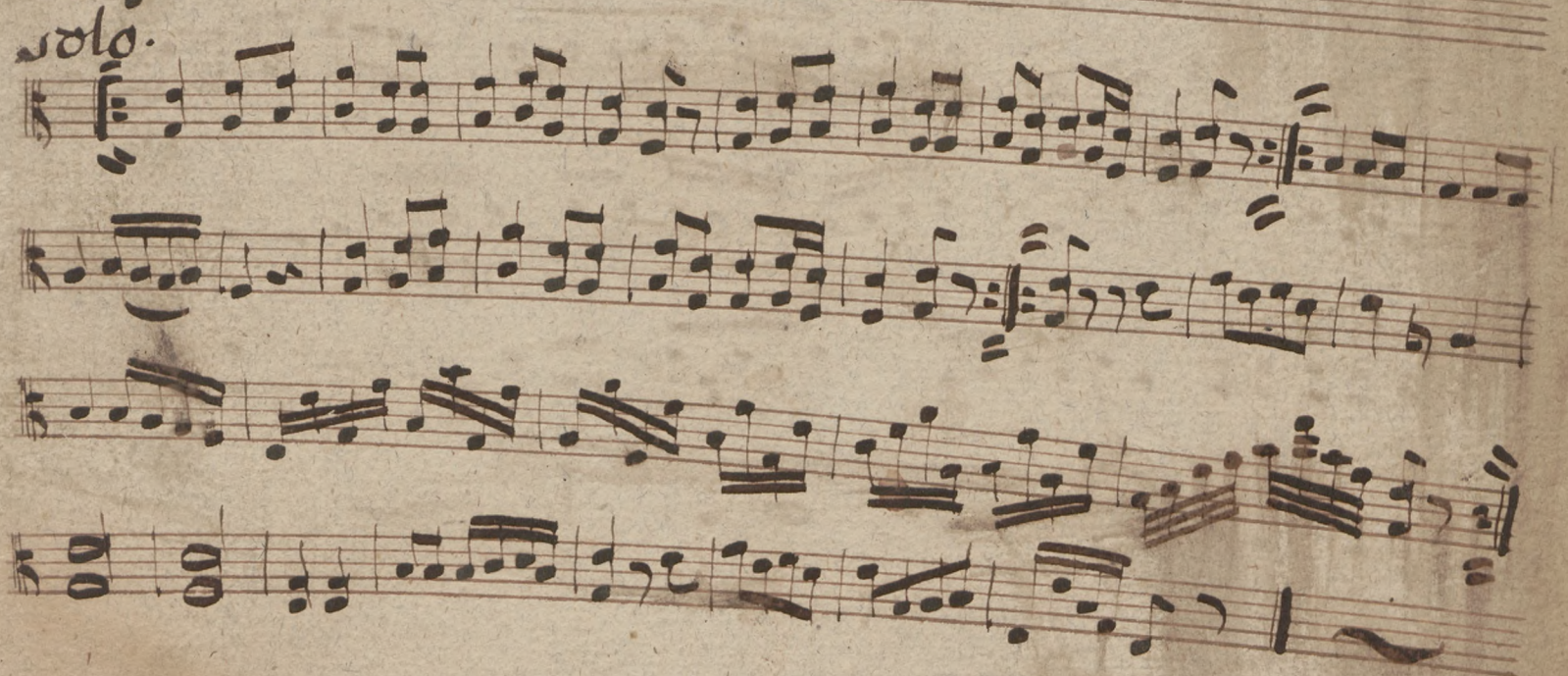
## Rondo.



solo.



solo.



Fine.



Sonata  
Allegro.

Corno in Es

da Rosetti.

Handwritten musical score for the first system of a Sonata in E major for Horn, by Franz Joseph Haydn. The page contains 15 staves of music. The first staff is in 2/4 time. The music is written in a single system. The tempo is marked 'Allegro.' and the key signature is one sharp (F#). The notation includes various musical symbols such as notes, rests, and dynamic markings like 'Dolce.' and 'p.'

Handwritten musical score for the second system of the Sonata in E major for Horn, by Franz Joseph Haydn. The page contains 2 staves of music. The first staff is in 2/4 time. The music is written in a single system. The tempo is marked 'Allegro.' and the key signature is one sharp (F#). The notation includes various musical symbols such as notes, rests, and dynamic markings like 'Dolce.' and 'p.'

Adagio

Handwritten musical score for the third system of the Sonata in E major for Horn, by Franz Joseph Haydn. The page contains 12 staves of music. The first staff is in 3/4 time. The music is written in a single system. The tempo is marked 'Adagio' and the key signature is one sharp (F#). The notation includes various musical symbols such as notes, rests, and dynamic markings like 'Dolce.' and 'p.'



Corno ob.



Handwritten musical score on the right page, featuring multiple staves of music. The notation includes various notes, rests, and dynamic markings. A section is marked "ad agno" and another "ad agno". The word "Fondo" is written at the bottom right.